

Powder Application Equipment

FEATURING PULSE POWER® ADVANCED CORONA CHARGING TECHNOLOGY



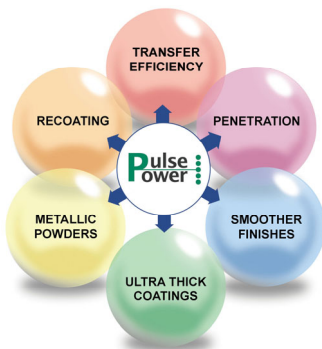
Simplicity™ Series Manual Handgun Units

When recipes and digital controls aren't required, the Parker Simplicity Series of Manual Handgun Units is the answer. The Simplicity Series features our Pulse Power Advanced Corona Charging Technology that gives you total control over the application of powder on your parts. Designed to deliver low current (μA) and high voltage (100 kV) simultaneously, the Simplicity Series is the simple answer to all difficult powder coating conditions. Powder feed hoppers are available as an option in many different sizes up to 200 lb.



High Voltage Source	Built in Cascade System
Input Voltage	24V Max
Output Voltage	100kV Negative Charge
Weight	480 g
Nozzles	Fan, Diffuser, Long Barrel

Charging Technology	Pulse Power®
Input Voltage	120VAC, 60 Hz, (90 VA)
Injector	GX8500AB
Powder Output	150 g/min—300 g/min (max)
Air Requirement	6-7 CFM, 75-90 PSI



Pulse Power : Advanced application tool features **PULSE POWER®** charging technology to promote excellent transfer efficiency, superior Faraday cage penetration, and excellent finish quality without adjustment or recipe change requirements.

Parker Ionics exclusive **Pulse Power** enhances overall application performance and transfer efficiencies by utilizing pulse width modulation (PWM), a continuous high voltage frequency modulation that prevents generation of excess "free ions" in the charge field that inhibits powder penetration inside corners & recesses, (Faraday Cage areas) and influences back ionizations undesirable orange peeled finish.



Parker Ionics
38147 Abruzzi Drive
Westland, MI 48185

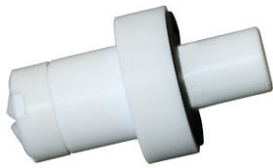
Phone: 734-326-7630
Fax: 734-326-7638
Email: sales@parkerionics.com



UNIT TYPE	<i>Simplicity</i>	<i>Simplicity-2</i>	<i>Simplicity-7</i>	<i>Simplicity-CS</i>	<i>Simplicity-C</i>
Powder Feeder (Optional)	No Hopper	Fluidized Bed Hopper - 2 Liter (Approx 2 lbs.)	Fluidized Bed Hopper - 7 Liter (Approx 5 lbs.)	Cup Stand—Floor, Table, or Booth mount (specify at order)	Gun Mounted Cup
Gun Cable Length	7 Meters	7 Meters	7 Meters	7 Meters	7 Meters
Injector	GX8500AB	GX8500AB	GX8500AB	GX8500AB	N/A
Maximum Powder Output	150 g/min (9.5mm hose) 300g/min (12mm hose)	150 g/min (9.5mm hose) 300 g/min (12mm hose)	150 g/min (9.5mm hose) 300 g/min (12mm hose)	150 g/min (9.5mm hose) 300 g/min (12mm hose)	150 g/min
Power Requirement	120 VAC 60 HZ (90VA)	120 VAC 60 HZ (90VA)	120 VAC 60 HZ (90VA)	120 VAC 60 HZ (90VA)	120 VAC 60 HZ (90VA)
Air Requirement	6-7 CFM, 75-90 PSI	6-7 CFM, 75-90 PSI	6-7 CFM, 75-90 PSI	6-7 CFM, 75-90 PSI	3-5 CFM, 75-90 PSI

Standard Nozzle

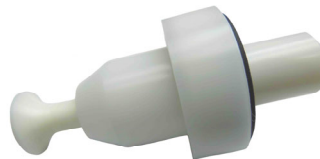
"W" Nozzle



Specially designed for low velocity spray pattern and optimal charging

Optional Nozzles

Diffuser Nozzle



Round hollow cone pattern
Optional sizes available

Gun Extensions



Available lengths:
250mm 300mm
500mm 1000mm

Lease to own
through



<https://www.clicklease.com/parker-engineering/>